

UNIVERSITY OF MINNESOTA

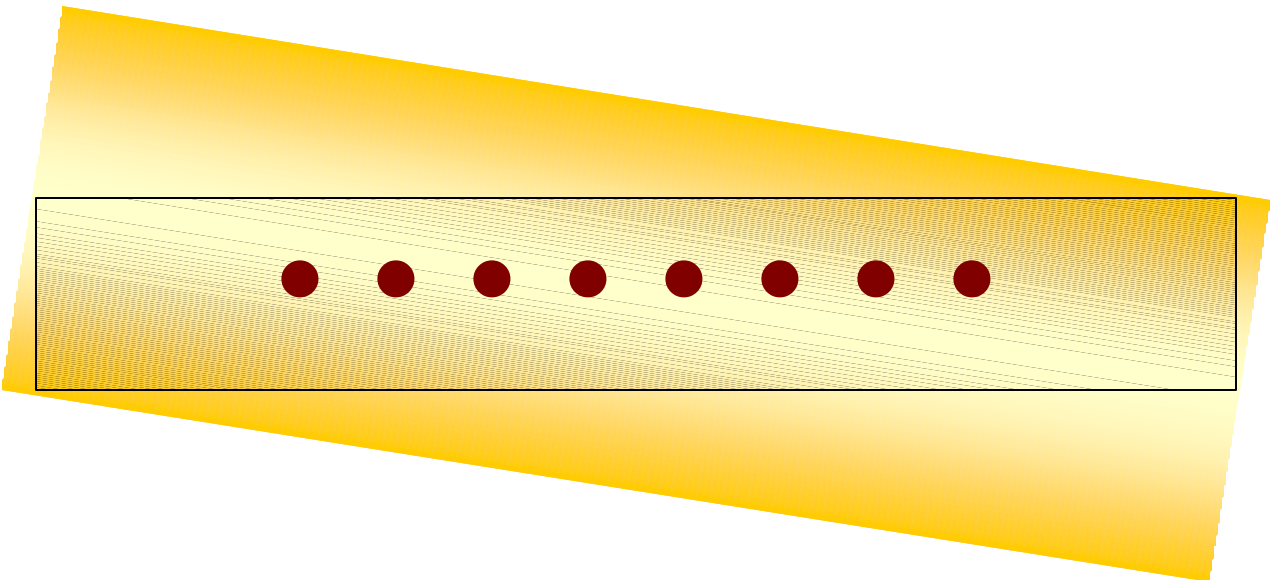
NEXO

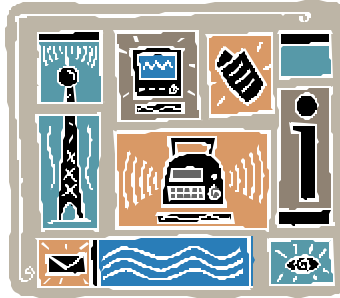
A Biweekly E-mail Newsletter of
the Department of Spanish & Portuguese Studies
College of Liberal Arts

Volume VIII, Issue 2 –September 20, 2002

INSIDE THIS ISSUE . . .

Feature Article:	1
Conferences and Call For Papers:	3
News and Announcements:	8
The Job Market:	15
Upcoming Events:	17





Feature:

Prominent Visitor from Brazil

Professor Laura Padilha from the Universidade Federal Fluminense (Niterói, Rio de Janeiro, Brazil) will be visiting the University of Minnesota, in conjunction with the course currently being offered by Professor Fernando Arenas, “Literatures and Cultures of Lusophone Africa.” Professor Laura (as she is known affectionately) is considered the *doyenne* of Lusophone African Studies in Brazil and has been an instrumental force in the growth of this particular field in the Brazilian academy. She is the author of several books and dozens of articles on Afro-Luso-Brazilian literatures and cultures published primarily in Brazil and Portugal, among other titles: *Novos pactos, outras ficções: ensaios sobre literaturas afro-luso-brasileiras* (2002), *Mário Pinto de Andrade: un intelectual na política* (2001, together with Inocência Mata), and *Entre voz e letra* (1995), on Angolan fiction, which won the Prêmio Mário de Andrade from the Biblioteca Nacional in Rio. Professor Laura has already been a visiting professor at various universities in Brazil, Portugal, and the United States, including here, at our own department back in 1988, during the time of beloved Professor Roberto Reis. She has been the president and vice-president of the two most important professional organizations in the field of literary studies in Brazil: ANPOLL (Associação Nacional de Pós-Graduação e Pesquisa em Letras e Linguística) and ABRALIC (Associação Brasileira de Literatura Comparada). Several years ago, Brazil’s largest newsweekly *Revista Veja*, named Laura Padilha, together with her husband Matusalém, two of the most prominent Afro-Brazilians for their contributions to Brazilian society. With her intellectual brilliance and enormous personal charisma, Professor Laura is bound to leave a lasting imprint here at Minnesota, as she visits us for the second time. She will offer a public lecture on the literary and cultural relations between Africa and the Americas, focusing more specifically on the ties

between Lusophone African writers and those of the African diaspora throughout Latin America (including poets from the Spanish-speaking Caribbean). A reception will follow the lecture (please see the information below). Let us make sure we give Professor Laura Padilha a warm Minnesota welcome!

“África e América: identidades em espelho”

Friday, September 27, 2002

14h00 Folwell 344



Conferences and Call For Papers

8th International Pragmatics Conference

TORONTO, Canada

13-18 July 2003

Conference Chair: Monica HELLER (Univ. of Toronto)

Themes: As always, the conference will be open to all themes relevant to the pragmatics of language in its widest sense as an interdisciplinary cognitive, social, and cultural perspective. Prospective participants should, however, pay attention to the distribution of topics across event types, as described below. In addition, there is a special theme.

Special Theme: *Linguistic pluralism: policies, practices and pragmatics*

This is a theme that was chosen by the Local Site Committee and approved by the Consultation Board. It corresponds to the interests of a large number of IPrA members, and permits us to link cognitive, linguistic, social and political approaches to a phenomenon of long-standing interest in pragmatics and of current theoretical, as well as social and policy importance. The intention will be to focus the conference on making those links in a number of ways, ranging from choice of plenary speakers and special panels, to invitations to interested and relevant Canadians outside the academy. The theme is one which also fits the venue, given Canada's historical involvement in debates on such issues, and Toronto's profile as a major centre of new globalized urban multilingualism. However, it is meant here to go beyond traditional ideas about "multilingualism" understood as connecting linguistic difference primarily to ethnic or national distinctions, and rather to extend that concept to the links between language and all forms of social difference and social inequality. The theme is also appropriate to the expertise of the members of the Local Site Committee which is committed to tying academic approaches to broader public debates.

CALL FOR PAPERS

There is one submission deadline for paper and panel proposals: **1 November 2002**. A call for papers with complete instructions is to be found on the IPrA website (address below). Paper versions can be requested from Ann Verhaert (ann.verhaert@ipra.be)

GO TO: <http://ipra-www.uia.ac.be/ipra/>

Jef Verschueren
IPrA Research Center
University of Antwerp
Universiteitsplein 1
B-2610 Wilrijk
Belgium
tel. +32-3-8202773, fax & tel. +32-3-2305574
jef.verschueren@ua.ac.be

also visit the IPrA website at <http://ipra-www.uia.ac.be/ipra/>



CALL FOR PAPERS
Creating Teacher Community:
Third International Conference on Language Teacher
Education

May 29-31, 2003

Radisson-Metrodome Hotel
Minneapolis, Minnesota, USA

The Center for Advanced Research on Language Acquisition at the University of Minnesota and conference planning committee members are seeking proposals for papers and symposia on all aspects of the education and professional development of language teachers for the Third International Conference on Language Teacher Education to be held May 29-31, 2003 in Minneapolis, Minnesota, USA. Papers and symposia may report on data-based research, theoretical and conceptual analyses, or best practices in language teacher education.

The mission of the conference is to address the education of teachers of all languages, at all instructional and institutional levels, and in all the many national and international contexts in which this takes places, including: English as a Second or Foreign Language (ESL/EFL) instruction; foreign/modern/world language teaching; bilingual education; immersion education; indigenous and minority language education; and the teaching of less commonly taught languages. The conference will bring together teacher educators from these many contexts to discuss and share research, theory, and best practices and to initiate and sustain meaningful professional dialogue across languages, levels, and settings. The conference will focus on the following four broad themes: The Knowledge Base of Language Teacher Education; Social, Cultural, and Political Contexts of Language Teacher Education, Collaborations in Language Teacher Education; and Processes of Language Teacher Education.

The priority deadline for submission of proposals for papers and symposia is **November 1, 2002**. Submission guidelines are available on the CARLA website at: <http://carla.acad.umn.edu/conference2003/CALLFORPAPERS.html>.

For further information, email the conference planning committee at: lteconf@tc.umn.edu



LA CHISPA

Prof. Nicasio Urbina
Department of Spanish and Portuguese
302 Newcomb Hall
New Orleans, LA 70118
Phone: (504) 865-5518
Fax: (504) 862-8752
e-mail: urbina@tulane.edu

CALL FOR PAPERS
for
LA CHISPA 2003
January 23 - 25, 2003

LA CHISPA is a refereed international conference on Hispanic languages, literatures and cultures which has been sponsored by Tulane University and held in New Orleans in alternate years since 1981. The LA CHISPA 2003 Conference will be held in January 23 - 25, 2003, at the Monteleone Hotel in New Orleans. You and your colleagues are invited to submit papers on all topics dealing with Hispanic languages, literatures and cultures.

You are requested to submit **both** your paper and an abstract by the deadline of **October 1, 2002**. Please send both in separate attachments to lachispa@tulane.edu in Microsoft Word preferable or compatible system.

Abstracts format: Please submit **as soon as possible** a 200 word abstract. Provide a statement which will help us include your paper in an appropriate section. For example: novel, XIX-century Spanish literature, Pardo Bazán, Naturalism, feminine issues, etc. Include on the abstract the following information:

Name	Office phone number
Academic Rank	Home phone number
Academic affiliation	E-mail address
Institution Address, with ZIP	Fax number
One-page CV	

Paper format: Papers may not exceed a reading time of twenty minutes (i.e., no more than **3000 words**, not counting the notes and works cited). Because of the huge variety

of print types, fonts, etc., a page count no longer is a valid measure of length. Therefore, we ask that, at the beginning of your paper, you include a **specific word count**. Please

double space your text. Your full paper is due on **October 1, 2002**. Include a one-page vitae with your abstract.

Submission: Send **both** the abstract **and** the paper as **attachments to:**
lachispa@tulane.edu

Special Sessions: The program committee will also entertain requests for the formation of special interest sessions organized around a specific topic, author, or work. Guidelines for forming such special sessions are included with this **call for papers**. The deadline for submission of **proposals for special sessions** is **October 1, 2002**.

Proposals for Special Sessions for LA CHISPA 2003 must include the following:

1. Title of proposed session (with brief statement of purpose).
2. Name, rank, school affiliation, institution address, phone number, FAX, and e-mail address of **organizer** with one page vita in each.
3. Name, rank, school affiliation, institution address, phone number, FAX, and e-mail address of each **participant**, with a one-page vita on each.
4. Titles of proposed papers.
5. Order of presentation of the papers.
6. Special session may or may not have a respondent and have from 3 to 5 participants.

The organizers of Special Sessions **may**, if they desire, read a paper in the Special Session **and/or** chair it. The Special Session proposal with all complete paper must be forwarded to lachispa@tulane.edu by or before **October 1, 2002**. Please have your participants send their papers to you by **September 1, 2002**. It will be the organizer's responsibility to examine all papers, judge and critique them, request appropriate changes in content, length, and/or form, if necessary. Please send all papers in final form to **LA CHISPA** by **October 1, 2002** for final approval.

Papers for Special Sessions must be submitted through the organizer of the session; session participants must NOT submit papers directly to LA CHISPA.

Send all Special Session materials to: lachispa@tulane.edu

NOTA BENE: Proposed participants need to be informed that papers may not exceed a reading time of **twenty minutes** (i.e., **no more than 3000 words**, not counting notes or works cited). At the beginning of your paper, you include a **specific word count**. Please **double space** your text. Paper submitted via e-mail Presentation time of twenty minutes per paper is strictly enforced.

We look forward to receiving your proposals.

Location and Lodging: All Conference activities will take place in New Orleans at the Monteleone Hotel, conveniently located in the historic French Quarter. We have

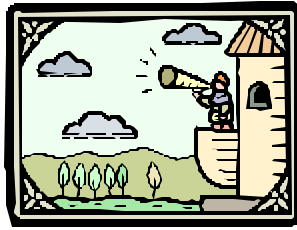
reserved a block of rooms for *LA CHISPA* participants at the Monteleone. If you need more information, you may contact the hotel 1-800-535-9595 or www.hotelmonteleone.com. A reduced rate of \$ 129.00 for single and \$ 139.00 for double has been established for the conference participants. The rooms have been recently renovated and the hotel is considered one of the most beautiful in New Orleans. Specific information concerning registration, hotel reservations, and other details will be sent in October to those who have submitted papers and to those who request it.

Conference Registration: Registration must follow immediately the announcement of the acceptance of the paper. **The absolute deadline for registration is December 1, 2002.** No registration will be accepted after that date. The fees are as follow:

\$ 110.00 - All participants

\$ 90.00 - Professor Emeritus and all Non-participants





NEWS AND ANNOUNCEMENTS

- **Feminist Studies Colloquium Series
Fall 2002**

The Feminist Studies Colloquium Series, presented by the Department of Women's Studies and the Center for Advanced Feminist Studies, with support from the CLA Scholarly Events Fund, takes place on Monday afternoons from 3:00 to 5:00 p.m. in the Susan Geiger Conference Room, 400 Ford Hall.

Sept. 30—Ellen Messer Davidow (Department of English), author of *Disciplining Feminism*



Resource Center of the Americas

<http://americas.org/>



Saturday Morning Coffee Hours

A weekly talk and discussion with a featured speaker. 10–11:30 a.m. \$4 (\$3 for members). Resource Center of the Americas, 3019 Minnehaha Ave., Minneapolis. Baked goods and fair-trade coffee for sale at Café of the Americas (coffee refills free). For more information or to give suggestions for speakers, contact **Irma Rodríguez Merfeld**, imerfeld@americas.org, 612-276-0788 (ext. 23). For a halfhour before and after each coffee hour, join us for an activist letter-writing effort with Resource Center–supplied ideas, background, addresses, stamps and envelopes. Made possible with funding from the Minnesota Humanities Commission in cooperation with the National Endowment for the Humanities and the Minnesota State Legislature.

September 21: "Peace in El Salvador"

Ten years after El Salvador's extremely bloody civil war, much of the poverty and injustice that led to it still exists. President Francisco Flores, friend of George Bush, has implemented devastating economic policies under which many Salvadorans are desperate, turning to crime, suicide, drug abuse and alcoholism. Join **Kelli Oborn**, University of Minnesota graduate student, as she discusses her experience with CRISPAZ (Christians for Peace in El Salvador). Working with Salvadoran women and youth, she learned first-hand the harmful effects of globalization's economic policies. *Presentation and discussion in English.*

September 28: "SweatFree Minneapolis"

The majority of workers who make the world's clothing face extremely low wages, excessive work hours and denial of the right to form unions to fight for fair working conditions. Part of an international effort to clean up the apparel industry, SweatFree Minneapolis is a local initiative to ensure that apparel and footwear purchased by the city of Minneapolis be made under fair conditions. **Charla Weiss**, organizer for the Labor, Globalization and Human Rights Project at the Resource Center, discusses global sweatshops and how we can act locally to contribute to the struggle for workers' rights. In addition, it's a good opportunity to meet our new Executive Director, Frank Vardeman. *Presentation and discussion in English.*



Food, Flicks, and Foreign Policy

A weekly talk and discussion with a featured speaker. 10–11:30 a.m. \$4 (\$3 for members). Resource Center of the Americas, 3019 Minnehaha Ave., Minneapolis. Baked goods and fair-trade coffee for sale at Café of the Americas (coffee refills free). For more information or to give suggestions for speakers, contact **Irma Rodríguez Merfeld**, imerfeld@americas.org, 612-276-0788 (ext. 23). For a halfhour before and after each coffee hour, join us for an activist letter-writing effort with Resource Center-supplied ideas, background, addresses, stamps and envelopes. Made possible with funding from the Minnesota Humanities Commission in cooperation with the National Endowment for the Humanities and the Minnesota State Legislature.

September 26—"La Guerra de Chiapas (The War in Chiapas)"

Produced by an independent film crew and shown on Canal 6 de Julio in Mexico, this documentary was shot during the first three weeks of the Chiapas uprising in January 1994. It vividly shows the tragic circumstances which led to the conflict in Mexico's most neglected and impoverished region, contrasting governmental policy with the Zapatistas' idea of what the region needs. The video interviews Zapatistas, townspeople and farmers,

meanwhile recording repression carried out by the Mexican army. It portrays the rebels' fight for democracy and the Mexican government's response with murder and bombs aimed at civilians. 1994. 40 minutes. Film and discussion in Spanish.

October 3—"Proof of Life"

Kidnap-for-ransom is an all too common problem in Latin America. American oil company employee Peter Bowman (David Morse) moves to a small, fictionalized Latin American nation (looking very much like Colombia) with his wife Alice (Meg Ryan), and soon after becomes another victim. His kidnapers, the ELT, are a radical Marxist faction who kidnap to raise capital. The oil company hires Terry Thorn (Russell Crowe) to work as a private "kidnapping and ransom" negotiator. Alice, whose marriage is in trouble, finds herself falling for the man who is her husband's only hope. *Proof of Life* is based on "Adventures in the Ransom Trade," an article by journalist William Prochnau published in *Vanity Fair*, as well as on the case of real-life kidnapping victim Thomas Hargrove. Directed by Taylor Hackford. 2000. 135 minutes. Film and discussion in English.

• Want to Volunteer Abroad?

The International Service and Travel Center (ISTC), in cooperation with the Career and Community Learning Center (CCLC) announces an exciting opportunity for students!

Through the Paulo Freire International Community Service Grant Program, selected students will receive \$2,000 to work on an individually designed international community service project.

Pick up your application at ISTC in 94 Blegen Hall or at CCLC in 345 Fraser Hall! Application deadline is Friday, November 1st. For more information, contact Laura at 625-0161 or lauravt@umn.edu.

• Fall 2002 Teaching Enrichment Series

Welcome to the Fall 2002 Teaching Enrichment Series, which brings together a number of sessions we're offering for a first time - creative (and competitive) group work, creating grading rubrics, and making use of "artist's books" as final course projects - as well as some of our "most requested" workshops - Students as Partners in the Learning Process, for example.

You'll notice also two "learning circles" workshops in the line up. With the Fall series, we're launching a year-long exploration of "learning circles" as a means for creating and sustaining discussions that work. John Wallace, a UM philosophy professor and a CTLS Faculty Fellow this year, will co-facilitate the two learning circle workshops, and hold a weekly office hour for informal conversations on "learning circles" (11:30 -13:30 on Wednesdays in the CTLS office, 120 Fraser Hall).

Because we've been receiving queries about how to support the development of graduate student writing we've included two community discussion and brainstorming sessions (one on each Twin Cities campus) in the fall line up. Please help us dig into this important conversation regarding support for native- and non-native speakers/writers of English by registering for a session to air your concerns and ideas.

A final word of preview - the TES line up also includes Teaching Circles for Professional Development; Teaching in the University, an on-line seminar; and a "Prizing Diversity" conference, for which the university offers a number of early bird registration scholarships.

The listing below includes titles, facilitators, time/date and location information for each workshop offered during Fall 2002. To REGISTER FOR WORKSHOPS - or see full descriptions of the circles, the on-line seminar, the conference, and all the individual workshop sessions - go to:

<http://www1.umn.edu/ohr/teachlearn/teaching/index.html>

PARTNERSHIPS IN LEARNING

Joyce Weinsheimer, CTLS

Tuesday, 24 Sept, 3:30-5 pm Peik Hall 225

Participants will investigate strategies for getting students involved and participating in both the classroom and during their study hours.

CREATING ACTIVE GROUPWORK

Judy Puncochar, Education Psychology

Thursday, 26 Sept. 3-4:30 pm Nolte 140

"Creating Active Student Groupwork in University Classrooms." This hands-on workshop addresses learner-centered competitive student teams and academic tournaments that can follow up teacher-centered instruction/lecture.

INTRO TO LEARNING CIRCLES

Wednesday, 2 Oct 3:30-5 pm Nolte Library

John Wallace, Philosophy; Ilene Alexander, CTLS

We'll incorporate some basic information about learning circles and, of course, experience discussion in a learning circle format. These workshops launches a yearlong learning circle project as part of John Wallace's Faculty Fellowship.

ELECTRONIC COMMUNICATION IN TEACHING

Friday, 4 Oct 2:30-4 pm Peik Hall 225

Ron Fitch, CLTS and Digital Media Center

This presentation will discuss how tools such as E-mail and threaded discussion boards can be used to communicate, build community and provide a form of class management.

LET THEM CREATE BOOKS

Tuesday, 8 Oct 2:30-4:30 pm 207A Lind Hall

Nance Longley, College of Education

Find out how your students assigned a final course projects can complete the project by reinterpreting/reworking/working with the classic structure of the book. We'll look at samples from UM classes, collaborate on making a book and discuss ways to engage students in this process.

SUPPORTING GRAD STUDENT WRITING

Thursday, 17 Oct 2:30-4 pm St. Paul VoTec 385

Wednesday, 30 Oct 8-10 am Mpls Ford 110

These workshops aim to engage advisors and graduate students an addressing 2 questions: "What strategies help us as advisors to guide graduate students making transitions into new writing formats?" and "How can we graduate students effectively support one another or gain resources to help us address writing questions?"

DEVELOPING RUBRICS & GRIDS

Ilene Alexander, CTLS

Wednesday, 23 Oct 8:30-9:30 am St. Paul Classroom

Office Bldg 00B36

Friday, 8 Nov 2:30-3:30 pm Mpls Peik Hall 225

With rubrics we can we let students know - before they begin writing a paper, studying for an exam, or producing a final project - what we expect of a final product. Work in this session will focus on developing a rubric with a follow up grading grid.

SERVICE LEARNING BEYOND CLA

Wednesday, 6 Nov 3-5 pm Burton Hall 123

Laurel Hirt, CCLC with faculty & community panelists

Faculty are using service-learning pedagogy in engineering, computer science, physics, chemistry, biology, management and business, health sciences, agriculture, horticulture, architecture, and environmental sciences classrooms. Find out from UofM faculty how you might begin to work with service-learning staff and community partners to transform an existing course into a service learning course.

APPRECIATIVE INQUIRY

Tuesday, 12 Nov 3:30-5 pm St. Paul Classroom Office Bldg B36

Katherine Hirsh, CTLS

A.I. is a method of information gathering that can empower groups by discovering what works best, and through this allowing them to incorporate more of these constructive behaviors into their interactions. We will be identifying peak positive experiences in teaching, clarifying our own values, and considering ways of more closely aligning behaviors with values.

APPLYING LEARNING CIRCLES

Thursday, 14 Nov 3-5 pm Nolte 140

John Wallace, Philosophy; Ilene Alexander, CTLS

This workshop will begin as a circle discussion related to diversity and will end with a brief presentation related to the development of questions.

POWERPOINT RECONSIDERED

Bill Rozaitis, CTLS and DMC

Tuesday, 15 Oct 3:30-5 pm Peik Hall 225

Through demonstrations and discussion, this workshop will explore pedagogically sound ways to use PowerPoint to encourage active learning.

ACTIVELY USING TECHNOLOGY

Wednesday, 20 Nov 3-5:15 pm St. Paul Classroom Office Bldg B36

Bill Rozaitis and Ron Fitch, CTLS and DMC

This session combines the two single sessions of October 4th and 15th described above.

GRANT WRITING

Monday, 2 December 2-4 pm St. Paul, Classroom Office Building B30

Victoria Mikelonis, Rhetoric

This workshop will introduce participants to a systematic method for researching funding sources and for designing, writing and submitting proposals, as well as consider issues concerning sustainability.

Center for Teaching and Learning Services

(612) 625-3041

120 Fraser Hall

<http://www.umn.edu/ohr/teachlearn/>

teachlrn@tc.umn.edu

University of Minnesota
College of Liberal Arts

**Department of Philosophy
Fall 2002 Colloquium**

Carlson School of Management
321 19th Avenue South
Minneapolis, MN 55455

For further information please contact:
Department of Philosophy, 831 Heller Hall
(612) 625—6563

Friday, September 20—Adam Morton (University of Oklahoma): *Emotional Articulacy—And Other Kinds*. 2-224 Carlson School of Management. 3:30 p.m.

Friday, October 11—John Bell (University of Western Ontario): *Infinitesimals and the Continuum*. 2-224 Carlson School of Management. 3:30 p.m.

Wednesday, October 16—Timothy Williamson (Oxford University, Wykeham Chair of Logic): *Absolutely Everything*. 1-135 Carlson School of Management. 3:30 p.m.

Friday, October 18—Timothy Williamson (Oxford University, Wykeham Chair of Logic): *Knowledge, Context, and the Subjects Point of View*. 2-224 Carlson School of Management. 3:30 p.m.



Petra's Pecado
Play is by Ruperto Reyes Jr.

Petra's Sin is produced by Teatro del Pueblo, a group that has been around in the Twin Cities for many years. "Hilarity ensues as Petra, who knows nothing about directing a play, endeavors to atone for her sins and deal with the issues of the people she loves."

"Petra's Pecado" will be playing at the Mixed Blood Theatre, 1501 S. 4th Street, Minneapolis (West Bank - U of M area) on Fridays, Saturdays and Sundays, from September 20th -to October 6th. Times are: Fridays and Saturdays: 8 pm; Sunday, September 22nd: 7 pm; Sundays, September 29 and October 5th, 8 pm. For tickets, call 651.665.0523 until September 15th. After September 15th, tickets are on sale through the Mixed Blood Office at 612.338.6131.



The Job Market

Carnegie Mellon University

Tenure-track position in Second Language Acquisition and Spanish at the assistant professor level to begin in the fall of 2003. Ideal candidates will have a Ph.D. in linguistics, second language acquisition or applied linguistics; a strong publication and research record with potential for outside funding/ and evidence of effective undergraduate teaching in Spanish. Applicants should possess native or near-native proficiency in Spanish, a strong commitment to undergraduate education, research interests at the graduate level, interdisciplinary interests beyond their own field of expertise, and enthusiasm for participating in a program in second language acquisition.

Responsibilities will include teaching one undergraduate Spanish language course in a culturally-oriented program and one SLA/linguistic course at the undergraduate or graduate level each semester.

Candidates should send a letter of application indicating any professional conferences they plan to attend during Fall 2002 (e.g., ACTFL, LSA, MLA), a curriculum vitae, statement of teaching, copies of relevant publications (not to be returned); and the names and contact information of three (3) prospective references to:

Chair, SLA Search Committee
Department of Modern Languages
Baker Hall 160
Carnegie Mellon University
Pittsburgh, PA 15213-3890.

Deadline for receipt of applications is **October 18, 2002.**



University of Oregon

Assistant Professor of Medieval Iberian Culture

Tenure-track position in medieval Iberian culture. The ideal candidate will have a research agenda focused on literature and culture in medieval Iberia including Muslim and/or Jewish influences, and be able to draw connections between medieval Iberia and the modern world. The successful candidate will be able to teach at all levels in Spanish and to offer undergraduate as well as the graduate programs. Evidence of outstanding teaching, scholarly potential and informed interest in one of the following: theoretical approaches; information technology in humanities research/teaching/advanced language pedagogy. We are a creative department of Romance Languages currently focused on developing innovative curriculum in and across French, Italian and Spanish, and seek a colleague able to draw connections between medieval Iberia and the modern world. ACTFL Superior/professional level proficiency in Spanish. Ph.D. in hand by Fall 2003.

Please submit cover letter, CV and three letters of recommendation to:

Medievalist Search Committee
c/o Leonardo García-Pabon, Acting Head
Department of Romance Languages
1233 University of Oregon
Eugene, OR 97403-1233

Priority will be given to files received by **November 15, 2002**.



Villanova University

Assistant Professor of Spanish, Medievalist

Tenure track position starting August 2003. Requirements: Ph.D. completed by August 2002. Specialization in Medieval literature. Background in literary theory, cultural studies or old Spanish desirable. Native or near-native fluency in Spanish and English essential, along with evidence of successful university level teaching. Teaching duties include MA and BA courses in appropriate field of expertise, as well as courses in language, composition and advanced grammar. The successful candidate is expected to maintain excellence in teaching, a productive research agenda, professional activity and appropriate service to the department, college and University.

Review of applications begins **November 15, 2002** and continues until the position is filled. Please send letter, curriculum vitae, graduate transcripts and three current letters of reference to:

Chair

Department of Classical and Modern Languages & Literatures
Villanova University
Villanova, PA 19085



Upcoming Events . . .



Lecture

Professor Laura Padilha

Universidade Federal Fluminense
(Niterói, RJ, Brazil)

"Africa e América: Identidades em Espelho"

**Friday, September 27
14h00-16h30
Folwell 344**

**A reception will follow in Folwell 12
(Lecture will be in Portuguese)**

Professor Padilha will also lecture in Portuguese on Lusophone African Women Writers in my Portuguese 5540 class (Literatures and Cultures of Lusophone Africa) on Wed, September 25 at 18h00, Folwell 240. It is open to the public as well.

.....
Cindy Kovach, Editor
kovac004@umn.edu
(612) 625-9814

Department of Spanish & Portuguese Studies
Room 34 Folwell Hall, 9 Pleasant St. SE
University of Minnesota
Minneapolis, MN 55455
Tel: (612) 625-5858
Fax: (612) 625-3549
Web: <http://spanport.cla.umn.edu>



The University of Minnesota is an equal opportunity employer and educator

Back issues of **NEXO** are archived on the department's website
<http://spanport.cla.umn.edu/publications/nexolib.htm>